

ELEMENTS OF ECONOMETRICS

AEB 6553

Food and Resource Economics

| | |
|-----------------------------|--|
| Catalog Description: | Econometric approach to problem solving. Major emphasis is placed on applications of methods to economic problems in agriculture and related industries. |
| Text: | <u>Basic Econometrics</u> , Gujarati 4 th edition. |
| Supplement: | Class notes on line |
| Class Notes: | http://www.fred.ifas.ufl.edu/~rward/AEB6553/Lectures |
| Old Exams: | http://www.fred.ifas.ufl.edu/~rward/AEB6553/Exams |
| Homework: | http://www.fred.ifas.ufl.edu/~rward/AEB6553/Homework |
| Data: | http://www.fred.ifas.ufl.edu/~rward/AEB6553/HWDData |
| Semester: | Spring, 2007 |
| Times: | Tuesday (8th and 9th periods) - 3:05 / 5:00 Thursday (9 period) - 4:10/5:00pm |
| Place: | 2196 McCarty Hall |
| Testing and Grading: | 1st Exam 20% 2nd Exam 20% Final Exam 45% Homework 15% |
| Final Exam: | May 4,2006 3:00pm-5:00pm |
| Instructor: | Dr. Ronald W. Ward 1125 McCarty Hall Food and Resource Economics Dept. 392-1854 Ext. 402 rward@ufl.edu |
| SAS Assistant: | Carlos Jauregui 2111 McCarty HallCCB cej@ufl.edu |

Table of Contents

| | | <u>Page</u> |
|-----|--|-------------|
| 1. | Introduction | 1 |
| 1.1 | Economic Methodology | 1 |
| | [1.1.1] Model Analyses (Ferguson) | 1 |
| 1.2 | Economics | 5 |
| | [1.2.1] Objectives of Econometrics | 5 |
| | [1.2.2] Tools and Methods of Econometrics | 6 |
| 1.3 | Procedures for Course | 7 |
| 1.4 | Review of the Components of a Model | 7 |
| 1.5 | Review of Statistical Concepts | 9 |
| | [1.5.1] Properties of Summation Operations | 9 |
| | [1.5.2] Elementary Properties of Probabilities | 10 |
| | [1.5.3] Statistical Concepts—Random Variables | 11 |
| 1.6 | Computer Programs | 13 |
| 2. | Two-Variable Regression Models | 14 |
| 2.1 | Covariance and Correlation | 14 |
| | [2.1.1] Covariance | 14 |
| | [2.1.2] Covariance Estimator | 15 |
| | [2.1.3] Correlation Coefficient | 16 |
| | [2.1.4] D Estimator | 18 |
| | [2.1.5] An Application | 18 |
| 2.2 | Behavior Relationships | 21 |
| | [2.2.1] Basic Assumptions | 22 |
| | [2.2.2] Instrumental-Variable Technique | 23 |
| | [2.2.3] Least-Squares Approach | 27 |
| | [2.2.4] An Example of β_0 and β_1 | 29 |
| | [2.2.5] Properties of β_0 and β_1 | 32 |
| | [2.2.6] Coefficient of Determination— R^2 | 40 |
| | [2.2.7] Hypothesis Testing for Two Variables | 42 |
| | [2.2.8] Application—Problem #3 | 48 |
| 3. | Multiple Regression | 50 |
| 3.1 | Least Squares—3 Variable Case | 50 |
| | [3.1.1] Least Squares Estimates of β_0 , β_1 and β_2 | 50 |
| | [3.1.2] Expected Value of β_j | 53 |
| | [3.1.3] Variance of β_j | 54 |
| | [3.1.4] Derivation of R^2 | 56 |
| 3.2 | Matrix Approach to Linear Regression | 57 |
| | [3.2.1] Least Squares Estimator Using Matrix | 58 |

Table of Contents, cont.

| | <u>Page</u> |
|--|-------------|
| [3.2.2] Properties of Estimators § | 61 |
| [3.2.3] R ² —Matrix Approach and Considerations | 63 |
| 3.3 Application | 65 |
| 3.4 Multiple Regression and Nonlinear Equations | 69 |
| [3.4.1] Semilog Transformation | 69 |
| [3.4.2] Double-log Transformation | 70 |
| [3.4.3] Reciprocal Transformation | 71 |
| [3.4.4] Logarithmic Reciprocal Transformation | 72 |
| [3.4.5] Polynomial Functions | 73 |
| [3.4.6] Specific Nonlinear Functions | 74 |
| 4. Estimation Problems | 76 |
| 4.1 Multicollinearity | 76 |
| [4.1.1] Perfect Multicollinearity | 76 |
| [4.1.2] Less than Perfect Multicollinearity | 77 |
| [4.1.3] Evidence of Multicollinearity | 79 |
| [4.1.4] Solutions to Multicollinearity | 79 |
| [4.1.5] Predictions | 81 |
| 4.2 Heteroscedasticity | 81 |
| [4.2.1] Effect of Heteroscedasticity | 82 |
| [4.2.2] Consequence of Heteroscedasticity | 85 |
| [4.2.3] Correcting Heteroscedasticity | 85 |
| 4.3 Autocorrelation | 86 |
| [4.3.1] Autoregressive Model | 87 |
| [4.3.2] Consequences of Autocorrelated Disturbances | 90 |
| [4.3.3] Generalized Least Squares | 91 |
| [4.3.4] Durbin-Watson Test for Serial Correlation | 93 |
| 5. Ad Hoc Procedures in Regression Analyses | 96 |
| 5.1 Dummy Variables | 96 |
| [5.1.1] Intercept Shift | 98 |
| [5.1.2] Slope Shift | 102 |
| [5.1.3] Intercept and Slope Shift | 105 |
| [5.1.4] Step Functions | 105 |
| 5.2 Trend Variables | 109 |
| [5.2.1] Time Trend Variable | 109 |
| [5.2.2] Jump and Gradual Time Trends | 110 |

Table of Contents, cont.

| | <u>Page</u> |
|---|-------------|
| 6. Lagged Regression Models | 114 |
| 6.1 Distributed Lag Models | 114 |
| 6.2 Lagged Models | 115 |
| [6.2.1] Lag in the Independent Variable | 116 |
| [6.2.2] Lag in the Dependent Variable | 116 |
| 6.3 Geometric Lag Models | 117 |
| [6.3.1] Adaptive Expectation Model | 118 |
| [6.3.2] Rigidity Model | 120 |
| [6.3.3] Estimation Problems | 121 |
| 6.4 Pascal Lag Model | 126 |
| 6.5 Polynomial Lag Model | 127 |
| [6.5.1] Almon Lag | 128 |
| 7. Simultaneous Equations and Identification | 132 |
| 7.1 The Identification Problem (Examples) | 134 |
| [7.1.1] Under-Identification | 138 |
| [7.1.2] Just Identified | 139 |
| 7.2 Identification Rule | 142 |
| [7.2.1] General Equations | 142 |
| [7.2.2] General Identification Rule | 142 |
| 7.3 Estimation Problem | 144 |
| [7.3.1] Derivation of Statistical Problem | 144 |
| [7.3.2] Large Sample Properties | 145 |
| 7.4 Estimation Techniques | 146 |
| [7.4.1] Indirect Least Squares (ILS) | 146 |
| [7.4.2] Two State Least Squares (TSLS) | 149 |
| 8. Pooling Cross Sectional and Time Series Data | |
| 9. Time Varying Parameters | |
| Estimations | |








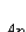
Index of /~rward/AEB6553 - Microsoft Internet Explorer

File Edit View Favorites Tools Help

Back Forward Stop Home Search Favorites Refresh Print View Source

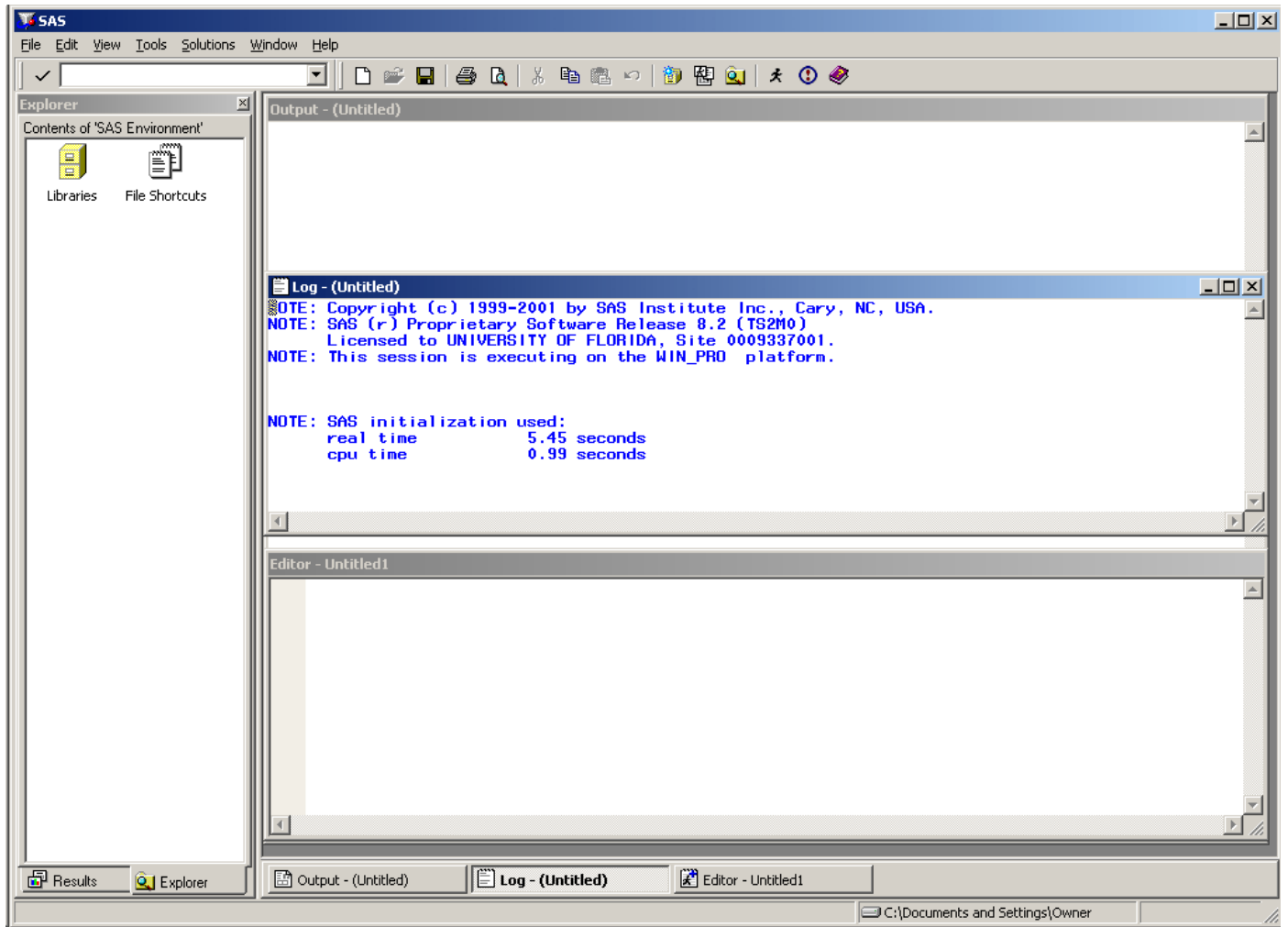
Address <http://www.fred.ifas.ufl.edu/~rward/AEB6553/> Go Links

Index of /~rward/AEB6553

| <u>Name</u> | <u>Last modified</u> | <u>Size</u> | <u>Description</u> |
|--|----------------------|-------------|--------------------|
|  Parent Directory | | - | |
|  HWData/ | 10-Jan-2006 11:34 | - | |
|  Homework/ | 10-Jan-2006 11:33 | - | |
|  Lectures/ | 10-Jan-2006 11:44 | - | |
|  Messages/ | 10-Jan-2006 11:44 | - | |
|  OldExams/ | 04-Feb-2005 18:51 | - | |
|  SASTips/ | 04-Feb-2005 18:51 | - | |
|  TSP_Manual/ | 04-Feb-2005 18:51 | - | |

Apache/2.0.53 (Unix) PHP/4.3.10 Server at www.fred.ifas.ufl.edu Port 80

Internet



.....

| KEYS <DMKEYS> | |
|---------------|---------------------------|
| Key | Definition |
| F1 | help |
| F2 | reshow |
| F3 | end; /*gsubmit buffer=def |
| F4 | recall |
| F5 | wpgm |
| F6 | log |
| F7 | output |
| F8 | zoom off;submit |
| F9 | keys |
| F11 | command focus |
| F12 | |
| SHF F1 | subtop |
| SHF F2 | |
| SHF F6 | |
| SHF F7 | left |
| SHF F8 | right |
| SHF F9 | |
| SHF F10 | wpopup |
| SHF F11 | |
| SHF F12 | |
| CTL F1 | |
| CTL F2 | |
| CTL F3 | |
| CTL F11 | |
| CTL F12 | |
| ALT F1 | |
| ALT F2 | |
| ALT F3 | |
| ALT F11 | |
| ALT F12 | |
| CTL B | libname |
| CTL D | dir |
| CTL E | clear |
| CTL G | |
| CTL H | help |
| CTL I | options |
| CTL J | |
| CTL K | cut |
| CTL L | log |
| CTL M | mark |
| CTL Q | filename |